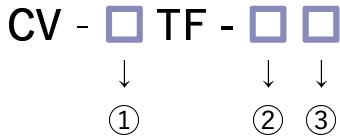


逆止阀 (Check Valves)

- 对应各种接头/连接方式。
- 接流体部全部都是氟化乙烯树脂(PFA/PTFE)，抗腐蚀。
- 超低粉尘清理(表面粗糙度加工、精密洗净、不使用O Ring)。
- 启动压力低(5kPa前后)。



型号表示方法 (How to order)



型号选定例 (Model Number Selection example)

CV-15TF-SB
: 1/2"(×3/8"), Pillar Super 300

- ◎ : 标准在庫品 (Standard stock)
- : 受注生産品 (Made to order)
- : 无在庫 (Not stock)

① 阀门尺寸 (Valve size)		8		8TF6 ※1		10		15		20		25	
	mm	Φ6 × Φ4 , N4		Φ8 × Φ6 , N6		Φ10 × Φ8 , N8		Φ12 × Φ10 , N10		Φ19 × Φ16 , N16		Φ25 × Φ22 , N22	
	inch	1/4"(×5/32")				3/8"(×1/4")		1/2"(×3/8")		3/4"(×5/8")		1"(×7/8")	
② 连接方式 (Connection method)		mm	inch	mm	inch	mm	inch	mm	inch	mm	inch	mm	inch
F	Flowell 20series	○	○ ※2	○	—	○	○	○	○	○	○	○	○
FA	Flowell 20Aseries	—	—	—	—	○	○	○	○	○	○	○	○
R	Flowell 60series	○	○	○	—	○	○	○	○	○	○	○	○
H	Flowell 80series	○	○	—	—	○	○	○	○	○	○	○	○
P	Pillar Super fitting	○	○	—	—	○	○	○	○	○	○	○	○
S	Pillar Super 300	◎	◎	○	—	◎	◎	◎	◎	◎	◎	◎	◎
L	Pillar Super flare	○	○	○	—	○	○	○	○	○	○	○	○
K	Kurabo Final lock	○	○	—	—	○	○	○	○	○	○	○	○
C	Kurabo K-Fitter	○	○	—	—	○	○	○	○	○	○	○	○
B	Bueno Fit-One	○	○	○	—	○	○	○	○	○	○	○	○
X	Flare Type	—	○	—	—	—	○	—	○	—	○	—	○
NL	Yodogawa Nano Link system	○ ※3	—	○ ※3	—	○ ※3	—	○ ※3	—	○ ※3	—	○ ※3	—
T	Tube Type	○	○	○	—	○	○	○	○	○	○	○	○

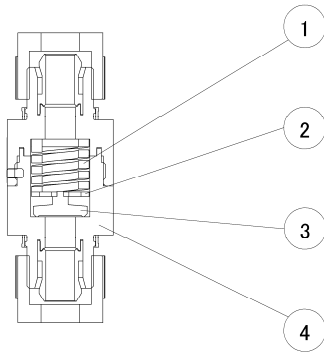
③ 管道规格 (Tube Standard)

A	mm
B	inch

注释 (Note)

- ※1 : "TF"前后分别记入"8"和"6"。
- ※2 : 配管尺寸为1/4"(×Φ4.3)。
- ※3 : 管道规格不记载, 只记载NL。(例) N4 : 8TF-NL

内部构造 (Internal structure)



品号 (No)	零件名 (Parts name)	材质 (Material)
①	弹簧 (Spring)	PTFE
②	支撑架 (Holder)	PTFE
③	逆止垫片 (Sheet)	PTFE
④	本体 (Body)	PTFE

规格 (Specifications)

使用流体 (Fluid)	化学品·纯水·气体 (Chemical liquid, DIW, Gas) ※1
流体压力 (Fluid pressure range)	0~0.4MPa
耐压 (Pressure resistance)	0.5MPa
启动压力 (Cracking pressure)	5kPa前后 ※2
流体温度 (Fluid temperature range)	10~80°C
大气温度 (Atmospheric temperature)	0~60°C
液体流动部分的材质 (Materials of liquid flowed parts)	PTFE

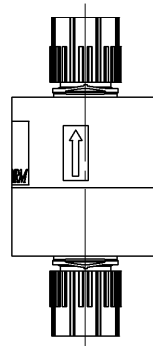
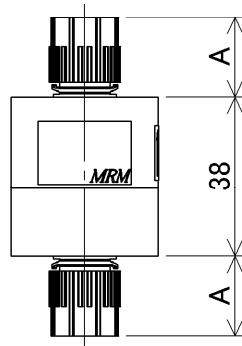
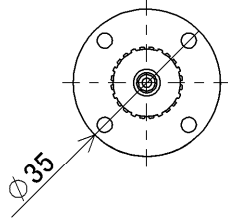
注释 (Note)

- ※1：气体比液体的逆止性能要低。
 ※2：底座的油封需要一定程度的逆压。

尺寸 (Dimensions)

- ▶ $\Phi 6 \times \Phi 4$, N4
- ▶ 1/4" ($\times 5/32$ ")

CV - 8 TF - □ □

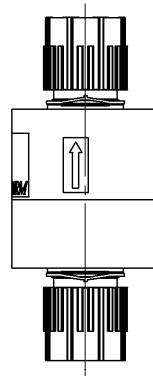
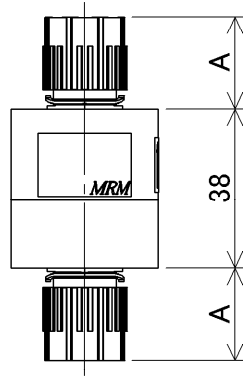
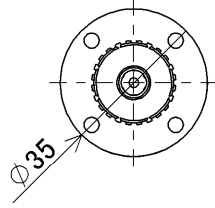


连接方式 (Connection method)	A
Flowell 20series	17
Flowell 60series	31
Flowell 80series	20
Pillar Super fitting	19.5
Pillar Super 300	19
Pillar Super flare	18.9
Kurabo Final lock	20.5
Kurabo K-Fitter	20
Bueno Fit-One	23.5
Flare Type	29
Nano Link system	11.2
Tube Type	17

尺寸 (Dimensions)

► $\Phi 8 \times \Phi 16, N6$

CV - 8 TF 6 - □□

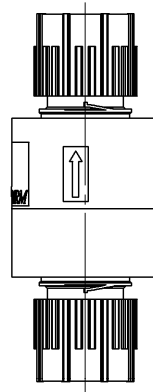
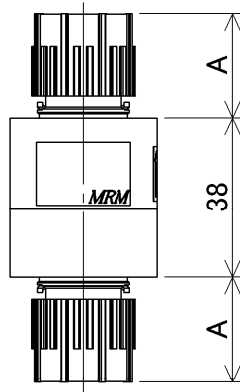
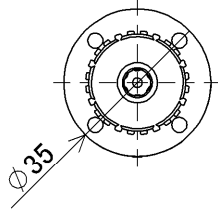


连接方式 (Connection method)	A
Flowell 20series	18
Flowell 60series	31
Pillar Super 300	22
Pillar Super flare	20.5
Bueno Fit-One	27.7
Nano Link system	15.1
Tube Type	18

尺寸 (Dimensions)

- ▶ $\Phi 10 \times \Phi 8$, N8
- ▶ 3/8"($\times 1/4$ ")

CV - 10 TF - □□

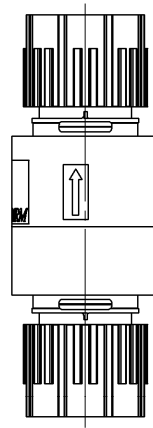
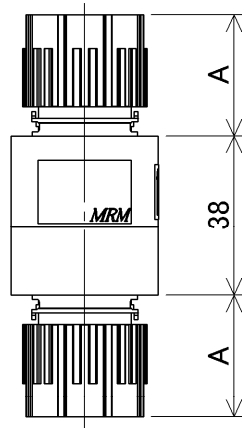
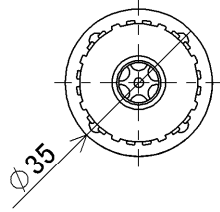


连接方式 (Connection method)	A
Flowell 20series	21
Flowell 20Aseries	21
Flowell 60series	39
Flowell 80series	25.5
Pillar Super fitting	26.5
Pillar Super 300	25
Pillar Super flare	24.8
Kurabo Final lock	29
Kurabo K-Fitter	20
Bueno Fit-One	27.7
Flare Type	31.8
Nano Link system	17.4
Tube Type	24

尺寸 (Dimensions)

- ▶ $\Phi 12 \times \Phi 10$, N10
- ▶ 1/2" (× 3/8")

CV - 15 TF - □ □



连接方式 (Connection method)	A
Flowell 20series	25
Flowell 20Aseries	25
Flowell 60series	39
Flowell 80series	29
Pillar Super fitting	30
Pillar Super 300	29
Pillar Super flare	28.8
Kurabo Final lock	30
Kurabo K-Fitter	23
Bueno Fit-One	32
Flare Type	33.8
Nano Link system	18.6
Tube Type	25

Suck back Valves

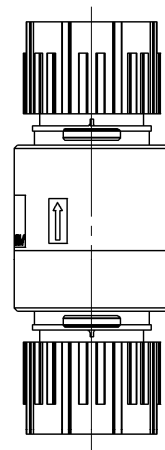
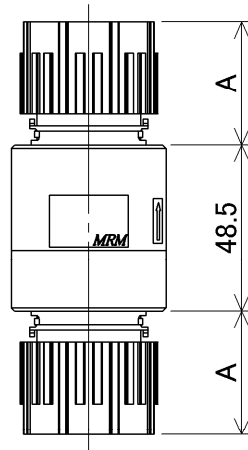
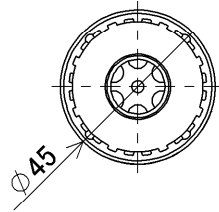
Check Valves

Relief Valves

尺寸(Dimensions)

- ▶ $\Phi 19 \times \Phi 16$, N16
- ▶ $3/4"$ ($\times 5/8"$)

CV - 20 TF - □ □

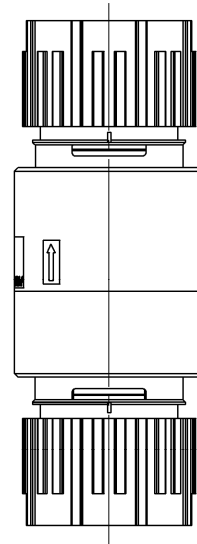
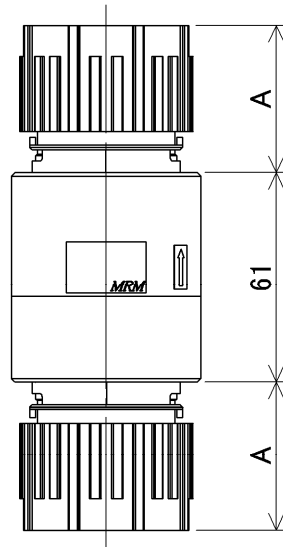
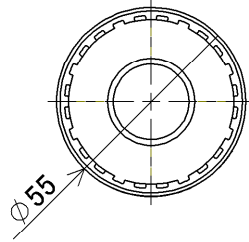


连接方式 (Connection method)	A
Flowell 20series	31
Flowell 20Aseries	31
Flowell 60series	44
Flowell 80series	36.5
Pillar Super fitting	39.5
Pillar Super 300	36
Pillar Super flare	35.8
Kurabo Final lock	34.5
Kurabo K-Fitter	27
Bueno Fit-One	41
Flare Type	36.8
Nano Link system	22.8
Tube Type	30

尺寸 (Dimensions)

- ▶ $\Phi 25 \times \Phi 22$, N22
- ▶ 1" ($\times 7/8$ ")

CV - 25 TF - □□



连接方式 (Connection method)	A
Flowell 20series	42
Flowell 20Aseries	42
Flowell 60series	51
Flowell 80series	39
Pillar Super fitting	45
Pillar Super 300	43
Pillar Super flare	41.5
Kurabo Final lock	39.5
Kurabo K-Fitter	31
Bueno Fit-One	48
Flare Type	45
Nano Link system	25.2
Tube Type	40