

止回閥 (Check Valves)

- 對應各種接續方式。
- 接流體部分為氟化乙烯樹脂(PTFE)，抗腐蝕。
- 低粉塵清理(高面粗度加工、精密洗淨、不使用O-ring)。
- 啟動壓力低(5kPa前後)。

型番表示方法 (How to order)

CV - □ TF - □ □



型番選擇例子 (Model Number Selection example)

CV-15TF-SB
 : 1/2" (×3/8"), Pillar Super 300

◎ : 標準在庫品 (Standard stock)
 ○ : 受注生産品 (Made to order)
 — : 無在庫 (Not stock)

① 閥門尺寸 (Valve size)		8		8TF6 ※1		10		15		20		25	
	mm	Φ6 × Φ4 , N4		Φ8 × Φ6 , N6		Φ10 × Φ8 , N8		Φ12 × Φ10 , N10		Φ19 × Φ16 , N16		Φ25 × Φ22 , N22	
	inch	1/4" (×5/32")				3/8" (×1/4")		1/2" (×3/8")		3/4" (×5/8")		1" (×7/8")	
② 接續方式 (Connection method)		mm	inch	mm	inch	mm	inch	mm	inch	mm	inch	mm	inch
F	Flowell 20series	○	○ ※2	○	—	○	○	○	○	○	○	○	○
FA	Flowell 20Aseries	—	—	—	—	○	○	○	○	○	○	○	○
R	Flowell 60series	○	○	○	—	○	○	○	○	○	○	○	○
H	Flowell 80series	○	○	—	—	○	○	○	○	○	○	○	○
P	Pillar Super fitting	○	○	—	—	○	○	○	○	○	○	○	○
S	Pillar Super 300	◎	◎	○	—	◎	◎	◎	◎	◎	◎	◎	◎
L	Pillar Super flare	○	○	○	—	○	○	○	○	○	○	○	○
K	Kurabo Final lock	○	○	—	—	○	○	○	○	○	○	○	○
C	Kurabo K-Fitter	○	○	—	—	○	○	○	○	○	○	○	○
B	Bueno Fit-One	○	○	○	—	○	○	○	○	○	○	○	○
X	Flare Type	—	○	—	—	—	○	—	○	—	○	—	○
NL	Yodogawa Nano Link system	○ ※3	—	○ ※3	—	○ ※3	—	○ ※3	—	○ ※3	—	○ ※3	—
T	Tube Type	○	○	○	—	○	○	○	○	○	○	○	○

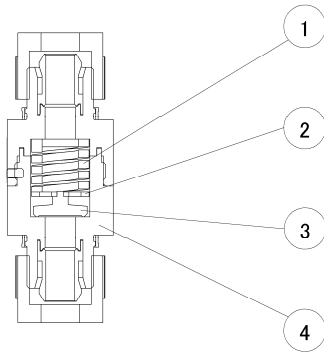
③ 管道規格 (Tube Standard)

A	mm
B	inch

注記 (Note)

- ※1 : "TF"前後請分別記入"8"和"6"。
 ※2 : 配管尺寸為1/4" (×Φ4.3)。
 ※3 : 管道規格不記載，只記載NL。(例) N4 : 8TF-NL

內部構造 (Internal structure)



品番 (No)	零件名 (Parts name)	材質 (Material)
①	彈簧 (Spring)	PTFE
②	支撐架 (Holder)	PTFE
③	逆止 (Sheet)	PTFE
④	本體 (Body)	PTFE

規格 (Specifications)

使用流體 (Fluid)	化學品・純水・氣體 (Chemical liquid, DIW, Gas) ※1
流體壓力 (Fluid pressure range)	0~0.4MPa
耐壓 (Pressure resistance)	0.5MPa
啓動壓力 (Cracking pressure)	5kPa前後 ※2
流體溫度 (Fluid temperature range)	10~80°C
大氣溫度 (Atmospheric temperature)	0~60°C
液體流動部分的材質 (Materials of liquid flowed parts)	PTFE

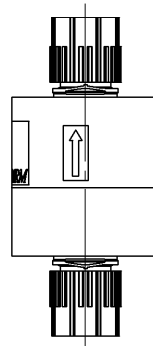
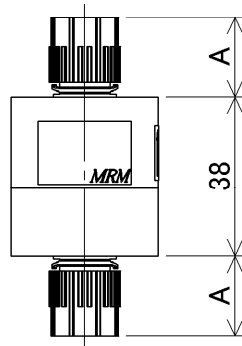
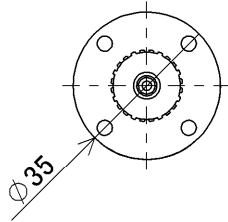
注記 (Note)

- ※1：氣體比液體的逆止性能低下。
 ※2：底座的油封需要一定程度逆壓。

尺寸 (Dimensions)

- ▶ $\Phi 6 \times \Phi 4$, N4
- ▶ 1/4" ($\times 5/32$ ")

CV - 8 TF - □ □

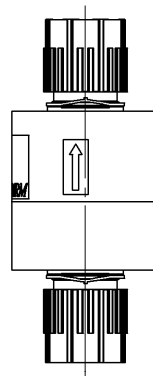
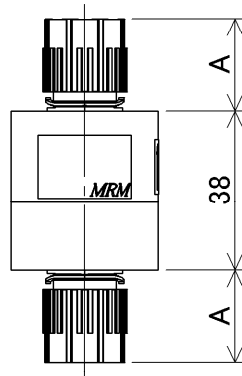
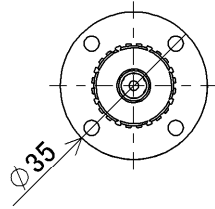


接續方式 (Connection method)	A
Flowell 20series	17
Flowell 60series	31
Flowell 80series	20
Pillar Super fitting	19.5
Pillar Super 300	19
Pillar Super flare	18.9
Kurabo Final lock	20.5
Kurabo K-Fitter	20
Bueno Fit-One	23.5
Flare Type	29
Nano Link system	11.2
Tube Type	17

尺寸 (Dimensions)

► $\Phi 8 \times \Phi 16, N6$

CV - 8 TF 6 - □□



接續方式 (Connection method)	A
Flowell 20series	18
Flowell 60series	31
Pillar Super 300	22
Pillar Super flare	20.5
Bueno Fit-One	27.7
Nano Link system	15.1
Tube Type	18

Suck back Valves

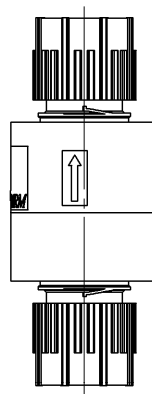
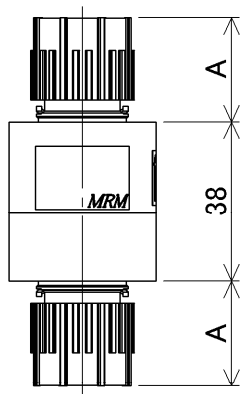
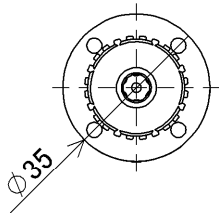
Check Valves

Relief Valves

尺寸 (Dimensions)

- ▶ $\Phi 10 \times \Phi 8$, N8
- ▶ 3/8"($\times 1/4$ ")

CV - 10 TF - □ □

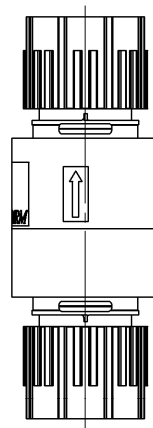
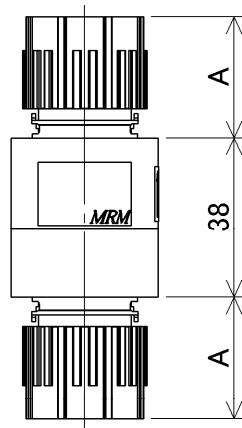
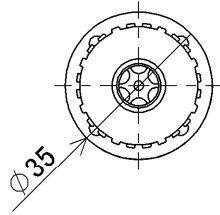


接續方式 (Connection method)	A
Flowell 20series	21
Flowell 20Aseries	21
Flowell 60series	39
Flowell 80series	25.5
Pillar Super fitting	26.5
Pillar Super 300	25
Pillar Super flare	24.8
Kurabo Final lock	29
Kurabo K-Fitter	20
Bueno Fit-One	27.7
Flare Type	31.8
Nano Link system	17.4
Tube Type	24

尺寸 (Dimensions)

- ▶ $\Phi 12 \times \Phi 10$, N10
- ▶ 1/2" (× 3/8")

CV - 15 TF - □ □



接續方式 (Connection method)	A
Flowell 20series	25
Flowell 20Aseries	25
Flowell 60series	39
Flowell 80series	29
Pillar Super fitting	30
Pillar Super 300	29
Pillar Super flare	28.8
Kurabo Final lock	30
Kurabo K-Fitter	23
Bueno Fit-One	32
Flare Type	33.8
Nano Link system	18.6
Tube Type	25

Suck back Valves

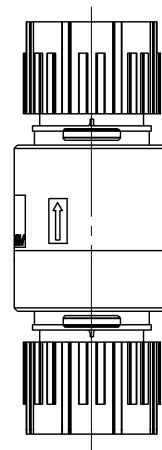
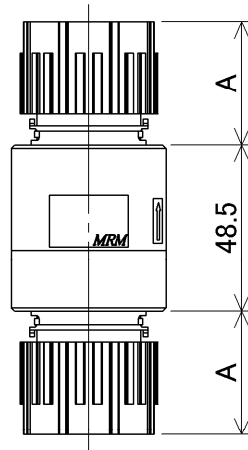
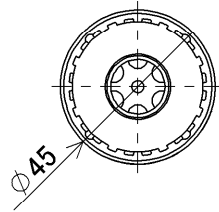
Check Valves

Relief Valves

尺寸 (Dimensions)

- ▶ $\Phi 19 \times \Phi 16$, N16
- ▶ 3/4" (×5/8")

CV - 20 TF - □ □

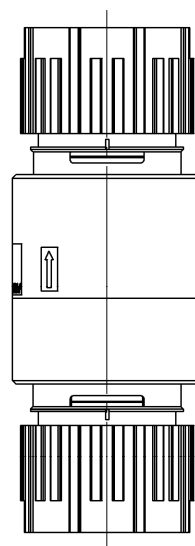
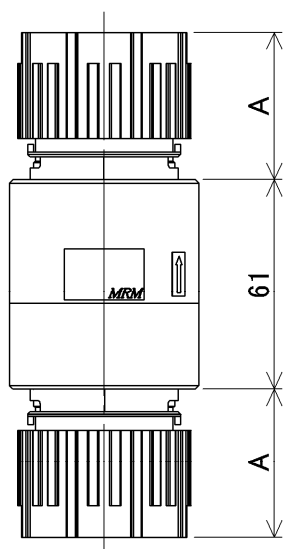
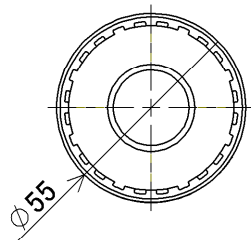


接續方式 (Connection method)	A
Flowell 20series	31
Flowell 20Aseries	31
Flowell 60series	44
Flowell 80series	36.5
Pillar Super fitting	39.5
Pillar Super 300	36
Pillar Super flare	35.8
Kurabo Final lock	34.5
Kurabo K-Fitter	27
Bueno Fit-One	41
Flare Type	36.8
Nano Link system	22.8
Tube Type	30

尺寸 (Dimensions)

- ▶ $\Phi 25 \times \Phi 22$, N22
- ▶ 1" ($\times 7/8$ ")

CV - 25 TF - □□



接續方式 (Connection method)	A
Flowell 20series	42
Flowell 20Aseries	42
Flowell 60series	51
Flowell 80series	39
Pillar Super fitting	45
Pillar Super 300	43
Pillar Super flare	41.5
Kurabo Final lock	39.5
Kurabo K-Fitter	31
Bueno Fit-One	48
Flare Type	45
Nano Link system	25.2
Tube Type	40